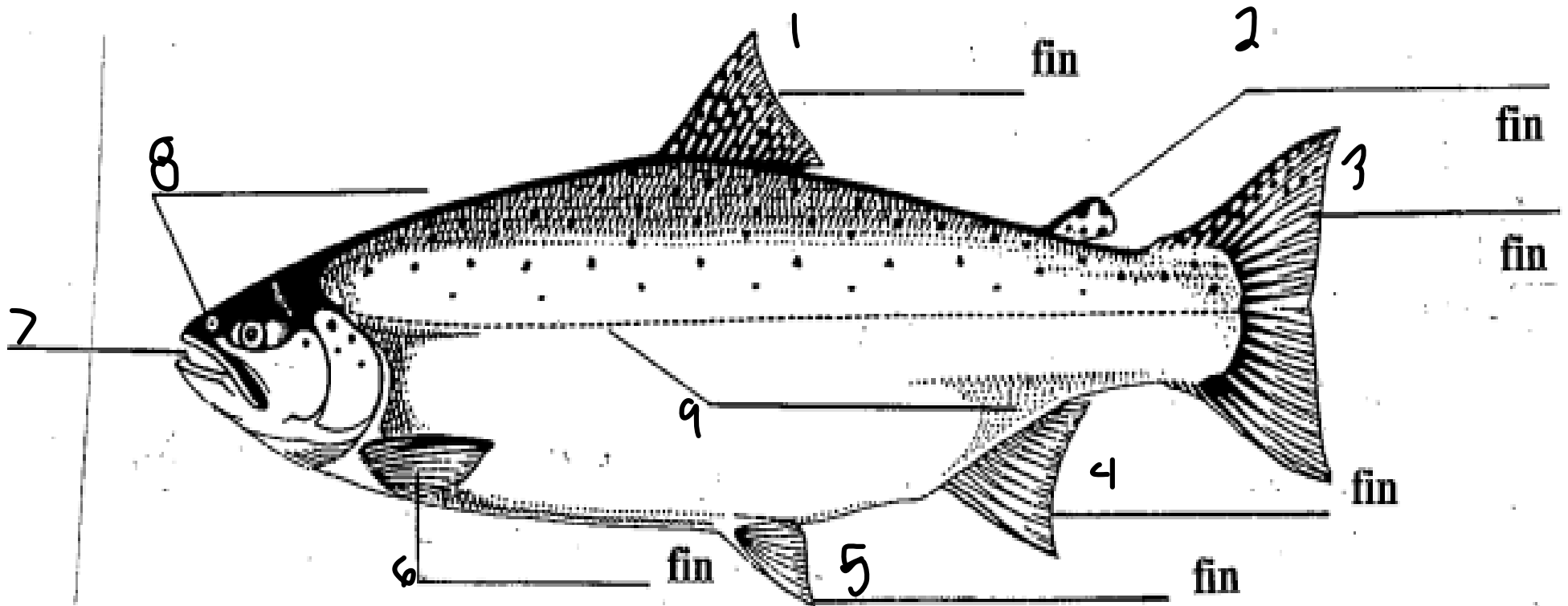


Name: _____

Salmonid Anatomy- Outside

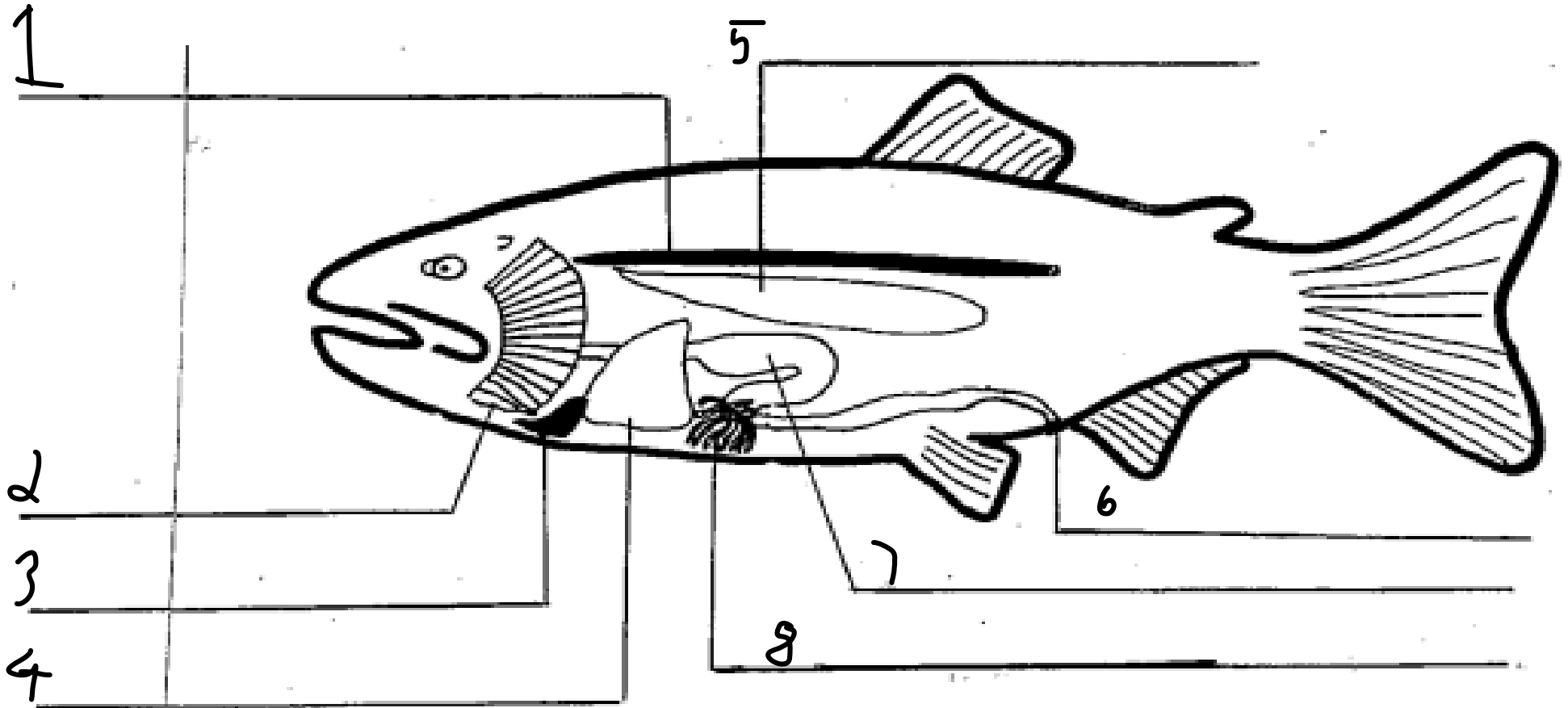
Anatomy is the study of the body parts of living animals



Word Box

- | | | |
|--------------|----------------|----------------|
| 7 Mouth | 2 Adipose Fin | 5 Pelvic Fin |
| 8 Nostrils | 3 Caudal Fin | 4 Anal Fin |
| 1 Dorsal Fin | 6 Pectoral Fin | 9 Lateral line |

Salmonid Anatomy- Inside



Word Box			
2	Gills	4	Liver
3	Heart	5	Swim Bladder
1	Kidney	6	Vent
8	Pyloric Caeca	7	Stomach



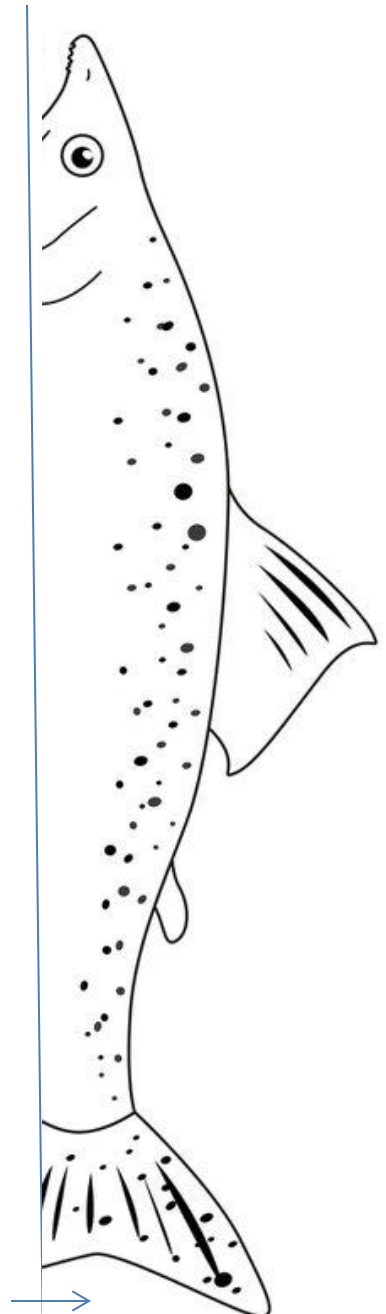
1



2



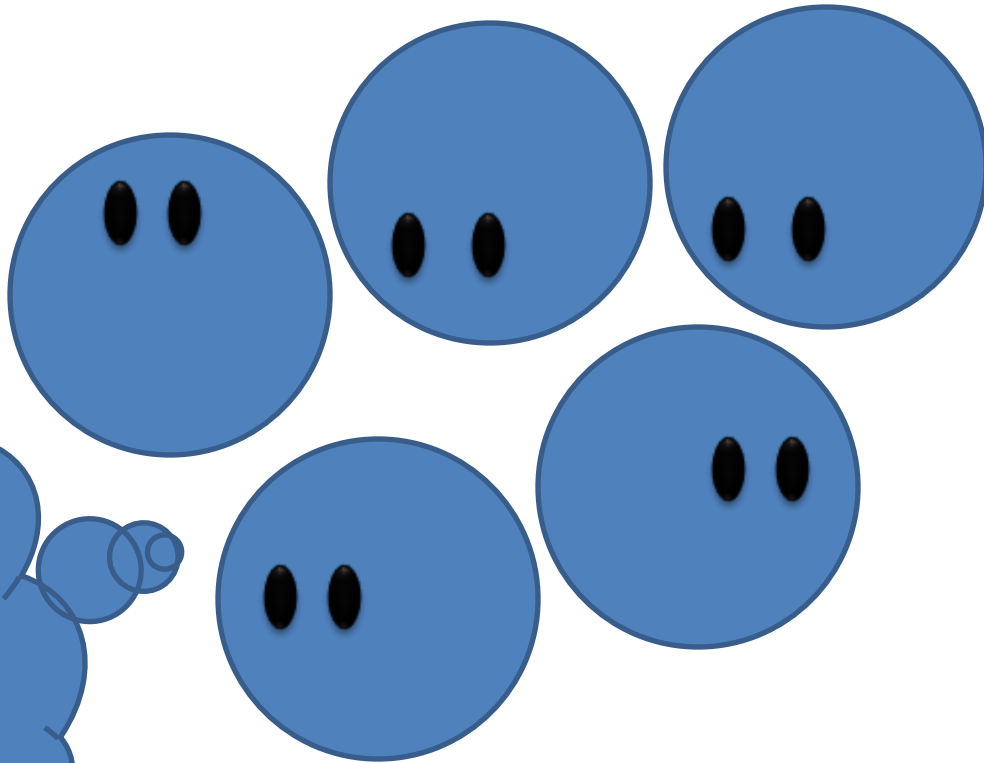
3



WELCOME TO SPAWNING GROUND AIRLINES

1. Design your Coho Salmon Spawning Colors
 2. Design your stream habitat (aka the rest of your airplane)
 3. Fold your flight craft
 4. The rain is here! Get your fish upstream to its spawning grounds!
 5. See if you can top your times
- HAVE A SAFE FLIGHT**

From Egg to Alevin
To Fry, do you
know what things
we need to stay
alive?



1. A LOT of cool, clean _____
2. Dissolved _____ to breathe.
3. Low _____ so our new
gills can stay unclogged!
4. When we become free-swimming fry we
need wood _____ for places
to _____
5. As soon as we are tiny fry we will eat
aquatic _____ for
breakfast, lunch and dinnertime

WORD BANK

1 WATER 4 SHELTER
2 OXYGEN 7 HIDE
3 SEDIMENT 5 INSECTS

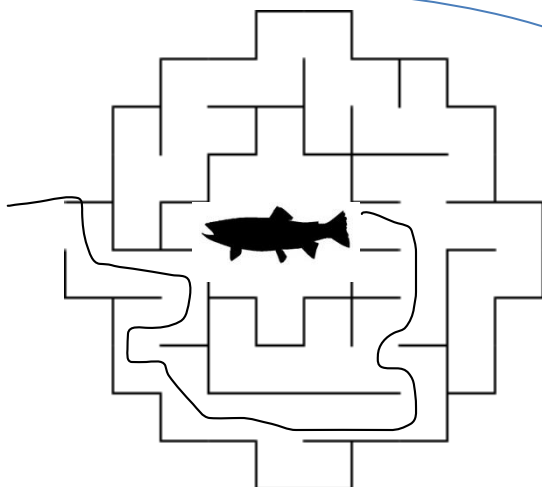
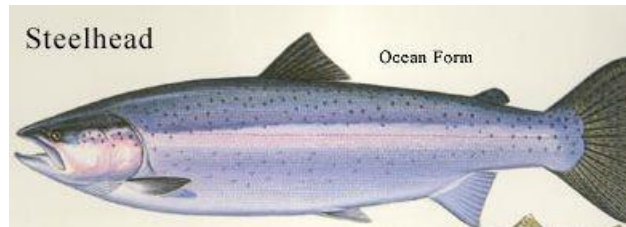




← This is what you would look like if you were to head into the ocean and live like a salmonid.

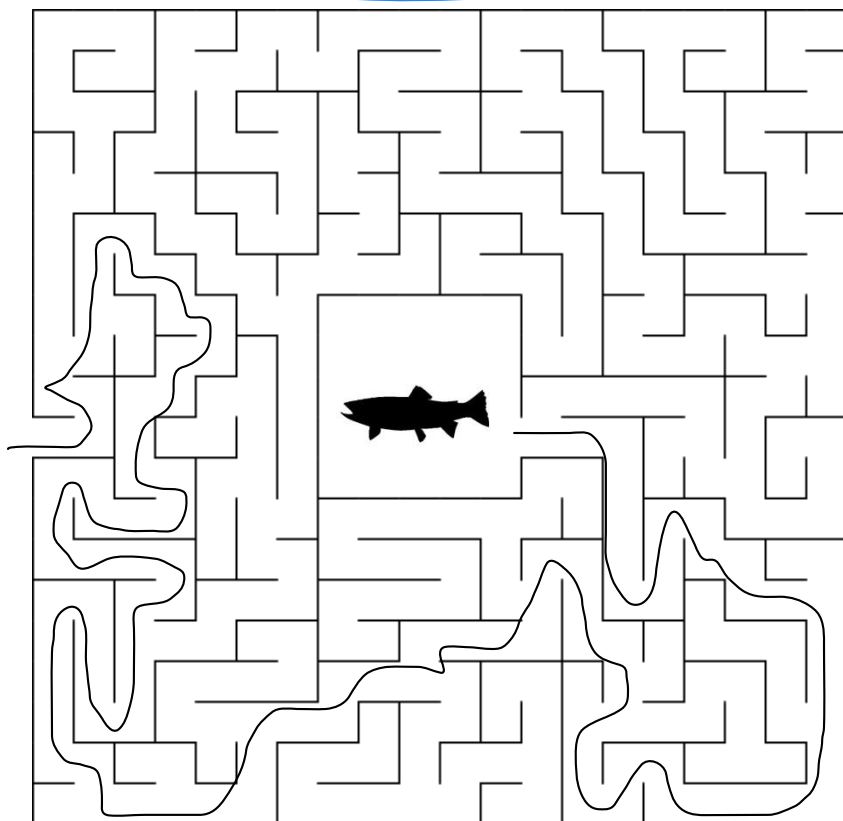
How do you think salmonids have to change as they travel from their freshwater stream to the saltwater ocean?

We call this change **SMOLTIFICATION**



These fish have smolted in the Estuary and are ready to go out to the ocean! Will you show them the way?

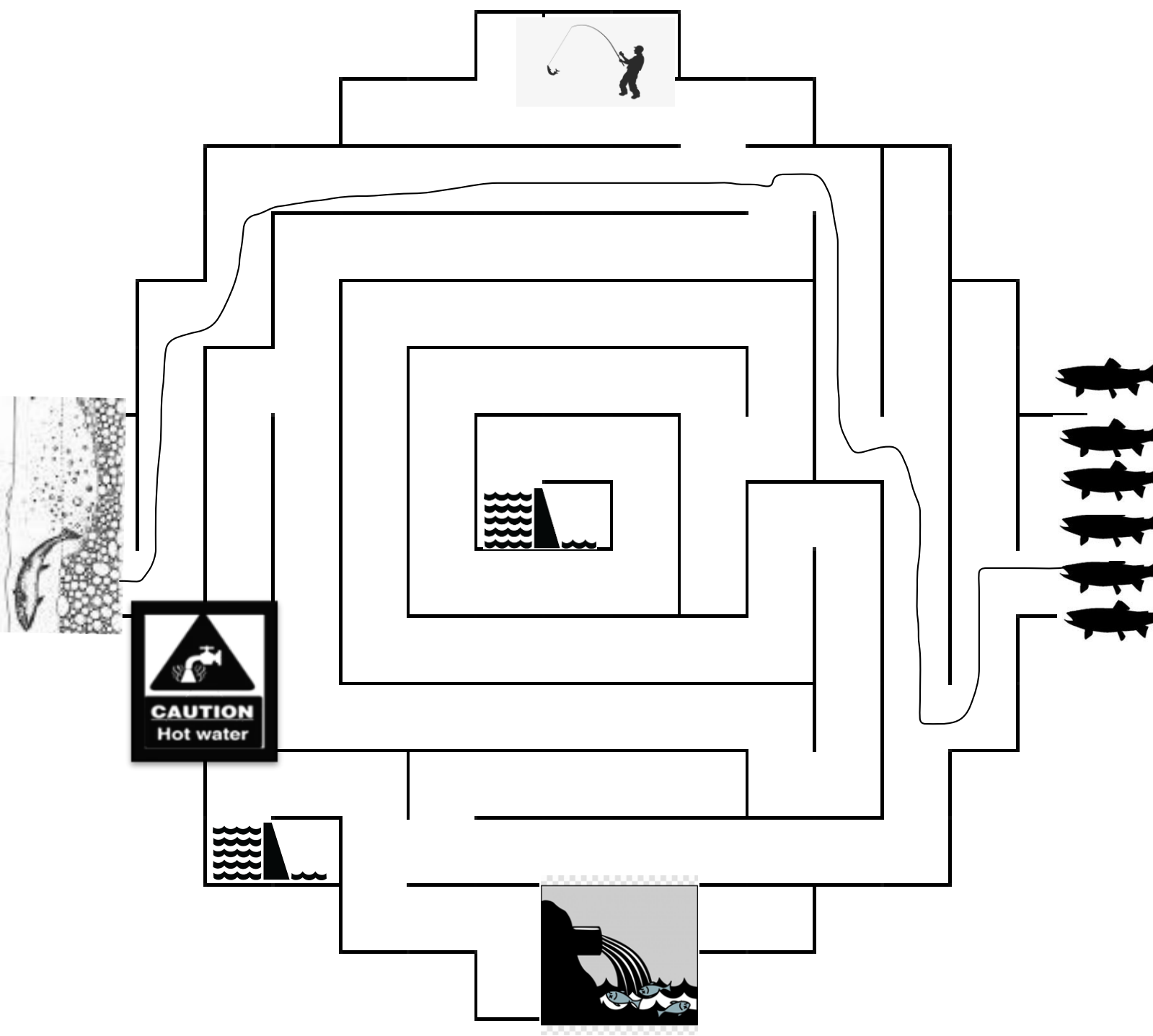
To Ocean



Anadromaze



Help our salmonids get to their perfect habitat for digging a redd! Can you make it past some of these barriers and limiting factors that fish face on their journey?



ARE YOU A SALMONID SCIENTIST?

I know you can swim the swim, but can you talk the talk?



IMPRINTING

ANADROMOUS

STEELHEAD

HATCHERY

SALMON

ALEVIN

SPAWN

SMOLT

GILLS

FIN

FRY

REDD



Pin the Fins on the Steelhead

1. Color your steelhead
2. Cut across the line and cut around the Caudal Fin
3. Close your eyes or blind fold yourself, just don't peek!
4. Holding your Caudal Fin, spin around twice and try to tape it where it belongs on the fish.
5. Show your classmates and challenge others
6. Bonus: Cut off the other fins and try the same thing
7. Mad Props for Life: Name all the other fins!

