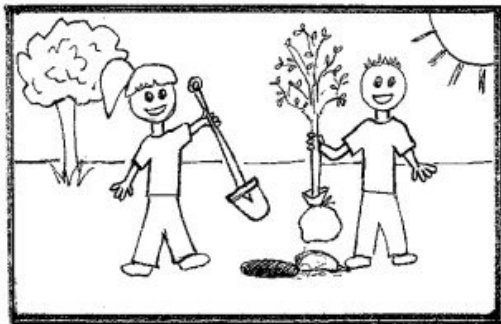


HOW TO BE A GOOD WATERSHED STEWARD:

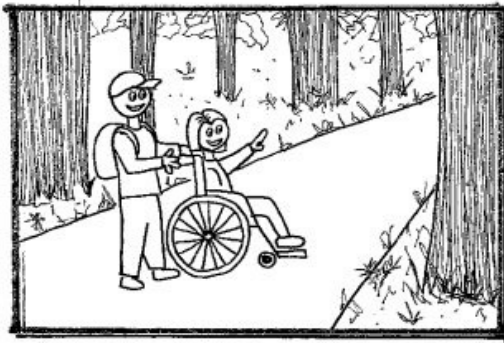
MATCH THE PICTURES WITH THE WORDS!



PLANT NATIVE
TREES
AND SEEDS!



EXPLORE THE
OUTDOORS!



RECYCLE
AND
COMPOST!

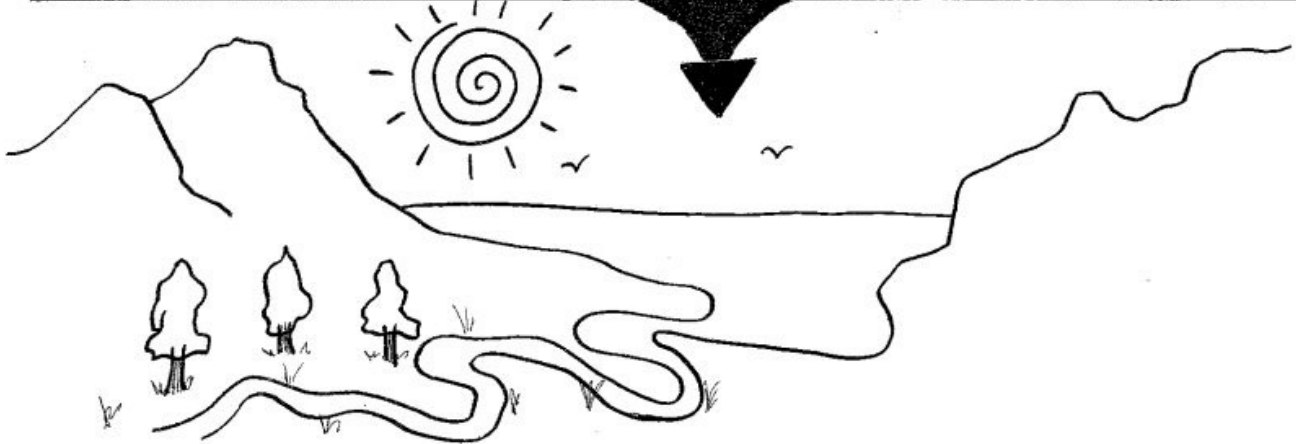
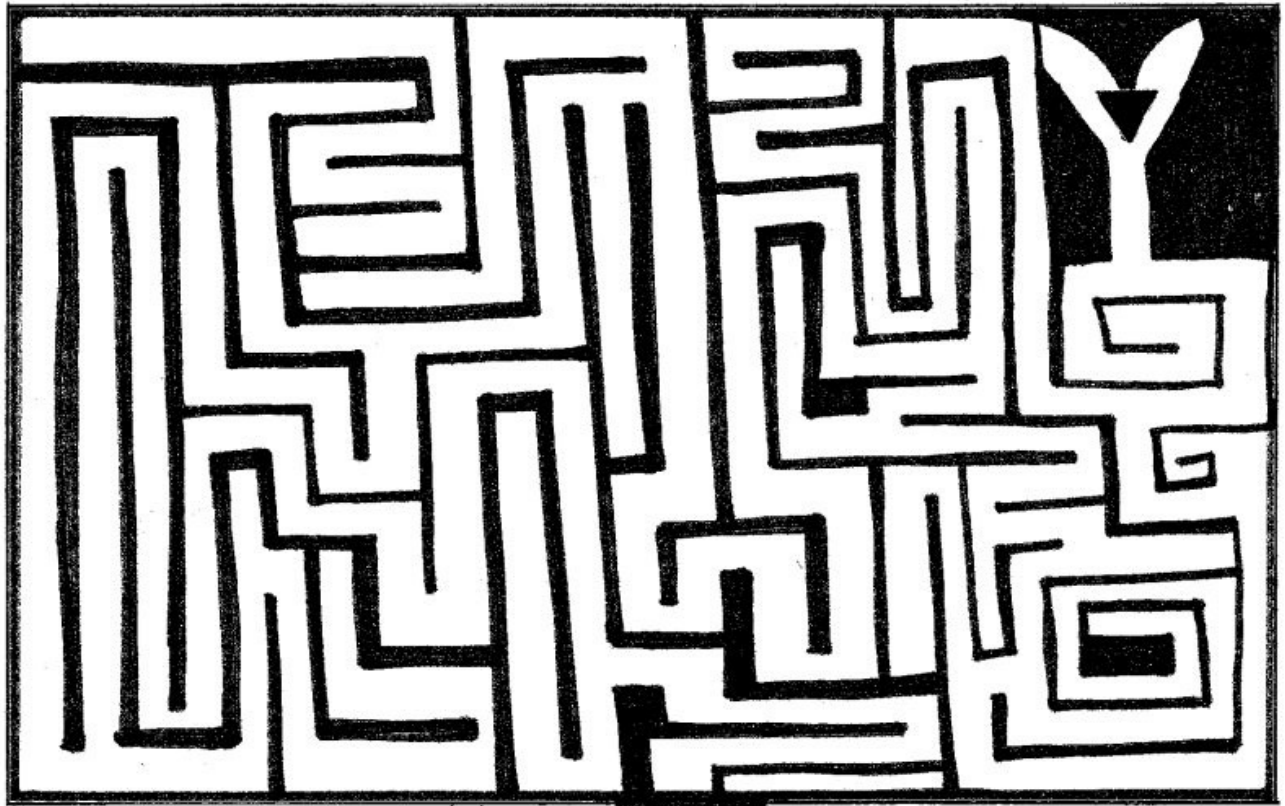


**CALIFORNIA
VOLUNTEERS**
Office of the Governor

"A program of the California Conservation Corps, WSP is one of the most productive programs for future employment in the environmental field. WSP is administered by California Volunteers, the Office of the Governor and sponsored by AmeriCorps and the California Department of Fish and Wildlife."

"The Watershed Stewards Program (WSP) is dedicated to improving watershed health by actively engaging in restoration science, civic service, and community education while empowering the next generation of environmental stewards."

HELP THIS STEWARD GET
TO THEIR LOCAL
WATERSHED!



**CALIFORNIA
VOLUNTEERS**
Office of the Governor

"A program of the California Conservation Corps, WSP is one of the most productive programs for future employment in the environmental field. WSP is administered by California Volunteers, the Office of the Governor and sponsored by AmeriCorps and the California Department of Fish and Wildlife. "The Watershed Stewards Program (WSP) is dedicated to improving watershed health by actively engaging in restoration science, civic service, and community education while empowering the next generation of environmental stewards."



The Groundwater Song

By: Emma Sevier

When it rains
Where does the water go
Some of it moves down to the ground below
Let it flow

Groundwater feeds our rivers and streams
It follows a **subdued topography**
there's water flowing under our feet
Flowing to the earth's drum beat

This water doesn't move on human time
It moves to a slower rhythm and rhyme
It slowly trickles down, watch, and wait
It takes some time to **infiltrate**

Have you ever heard of a **cone of depression**
It's when you pump, and you pump
And the land starts sinking

When the groundwater gets depleted
The **hydrologic system** is defeated

As our planet's getting hotter
We need to think more about the groundwater
We need it in the summer when the rains don't come
We need it in the winter for the salmon to run

I'd like to talk about **conservation**
It's time to start this conversation
Our groundwater is not for wasting
Our groundwater is not for wasting

Hi, I'm Emma!
Follow along with the lyrics and the definitions of some important words!



The lowering of land

When the water goes into the soil!

When the water flow lowers under the water table due to a well.

A water system that includes processes like precipitation

Saving groundwater from being used efficiently

WATER WE CONSERVING?

DRAW A PICTURE FOR EACH TERM BELOW
THAT HELP US CONSERVE WATER!

USE A REUSABLE
WATERBOTTLE!

FIX ANY PIPE LEAKS
IN YOUR HOME!

TURN OFF THE FAUCET
WHEN NOT IN USE!

TAKE SHORT SHOWERS!

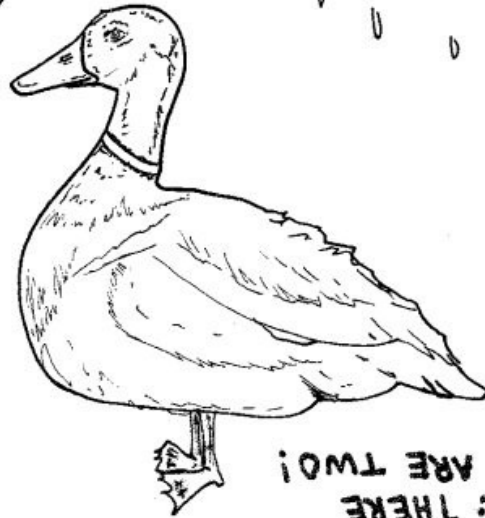
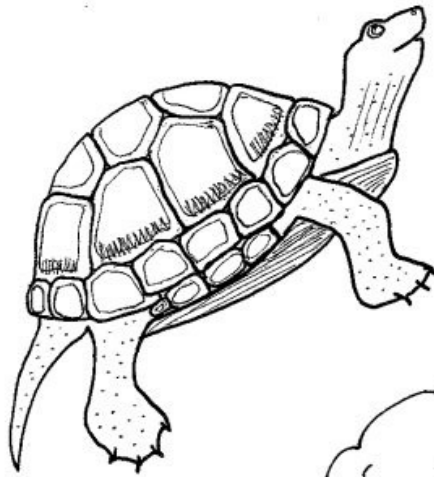


**CALIFORNIA
VOLUNTEERS**
Office of the Governor

"A program of the California Conservation Corps, WSP is one of the most productive programs for future employment in the environmental field. WSP is administered by California Volunteers, the Office of the Governor and sponsored by AmeriCorps and the California Department of Fish and Wildlife.

"The Watershed Stewards Program (WSP) is dedicated to improving watershed health by actively engaging in restoration science, civic service, and community education while empowering the next generation of environmental stewards."

WHICH OF THESE DO NOT
BELONG IN THE WATERSHED?



HINT: THERE
ARE TWO!



**CALIFORNIA
VOLUNTEERS**
Office of the Governor

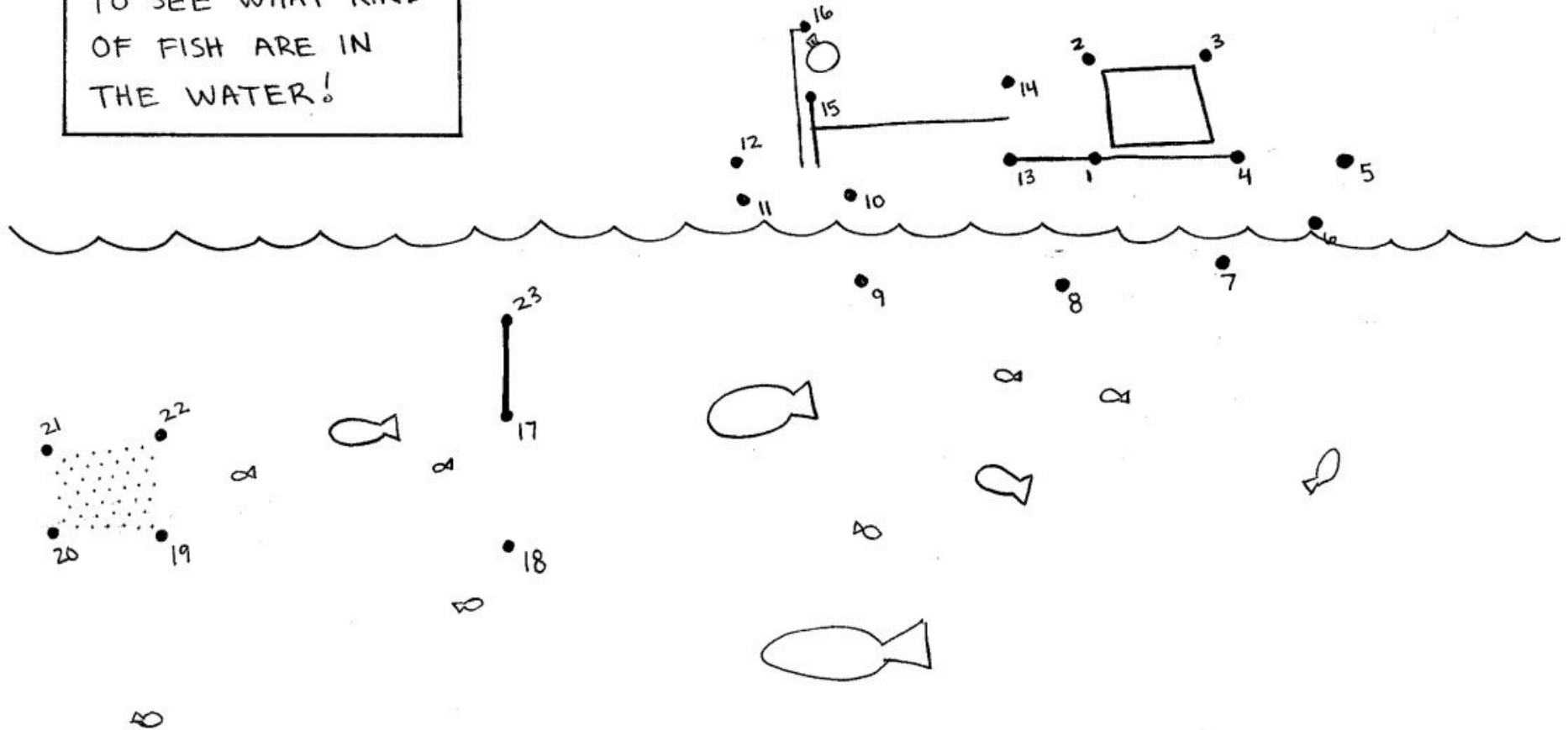
"A program of the California Conservation Corps, WSP is one of the most productive programs for future employment in the environmental field. WSP is administered by California Volunteers, the Office of the Governor and sponsored by AmeriCorps and the California Department of Fish and Wildlife."

"The Watershed Stewards Program (WSP) is dedicated to improving watershed health by actively engaging in restoration science, civic service, and community education while empowering the next generation of environmental stewards."

KODIAK TRAWLING

CONNECT THE DOTS
AND COLOR!

SCIENTISTS USE
KODIAK TRAWLING
TO SEE WHAT KIND
OF FISH ARE IN
THE WATER!



"A program of the California Conservation Corps, WSP is one of the most productive programs for future employment in the environmental field. WSP is administered by California Volunteers, the Office of the Governor and sponsored by AmeriCorps and the California Department of Fish and Wildlife.

"The Watershed Stewards Program (WSP) is dedicated to improving watershed health by actively engaging in restoration science, civic service, and community education while empowering the next generation of environmental stewards."

POINT REYES SMOLT TRAPPING

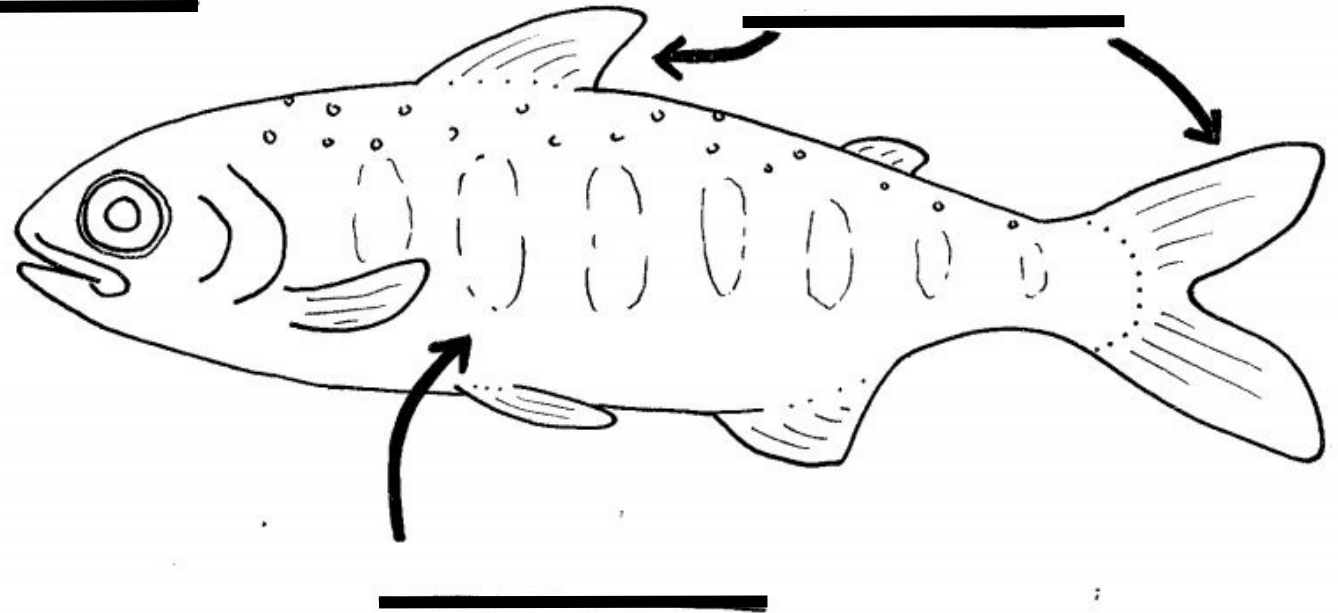
Color in the smolt and fill in the blanks using the vocabulary words in the word bank!

When salmonids transition from creeks to sea, this process is called:

“ _____ ”

WORD BANK

- Smoltification
- Darkening
- Silvery



"A program of the California Conservation Corps, WSP is one of the most productive programs for future employment in the environmental field. WSP is administered by California Volunteers, the Office of the Governor and sponsored by AmeriCorps and the California Department of Fish and Wildlife."

"The Watershed Stewards Program (WSP) is dedicated to improving watershed health by actively engaging in restoration science, civic service, and community education while empowering the next generation of environmental stewards."



Watershed Stewards Program

Average Water Use Tally

Average Water Use Tally

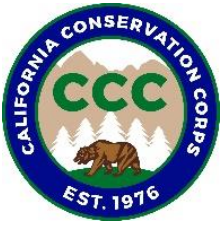
By filling out this tally sheet, you will learn where you use the most water at home, and you'll find out whether your water use is above or below average.

Directions:

Use this worksheet to keep track of your own water use for **one day**. You should include all water use for that day, even water used at school, at a friend's house, or in a restaurant. You probably won't perform every task on the chart during the tally.

1. Each time you use water in a way listed on the chart, mark a "1" next to the activity in column B.
2. At the end of the day, add up all of the 1s and write the total in column C.
3. For each activity, multiply the number of times you did that activity during the day, times the gallons of water it uses (column C x column D), and write that number in column E. That is the amount of water that activity used for the entire day.
4. Add up all of the numbers in column E, and write the total on the line at the bottom of the sheet.

A	B	C	D	E
Water Use Task	Times Done (tally)	Total Times Done (add up all of your tally marks and write the number here)	Gallons of Water used per time	Gallons of Water used per day (columns C x D)
Flush toilet			6	
Run faucet for 1 minute (waiting for water to get hot or cold)			4	
Take a bath			40	
Take a shower (10 minutes)			70	
Run dishwasher			15	
Wash a load of dishes by hand (without water running)			4	
Wash a load of dishes (with water running)			30	
Wash a car (water off while soaping)			40	
Wash a car (water on while soaping)			180	
Wash a load of clothing (in the washing machine)			40	
Brush teeth with water running			2	
Brush teeth with water off			1	
Drink a glass of water			.25	
Water the lawn (20 minutes)			150	
Wash hands			1	
TOTAL GALLONS OF WATER USED:				



Watershed Stewards Program

Average Water Use Tally

Reflection Questions:

1. Which activity that you did used the **most** water?

2. In which room of the house was the most water used?

3. What surprised you about this activity?

4. What water uses in your house were not included in your water use tally?

5. Was your average water use more or less than the national average of 50 gallons per person per day?

More Less

6. What are 3 things you can do to conserve water?

1. _____
2. _____
3. _____